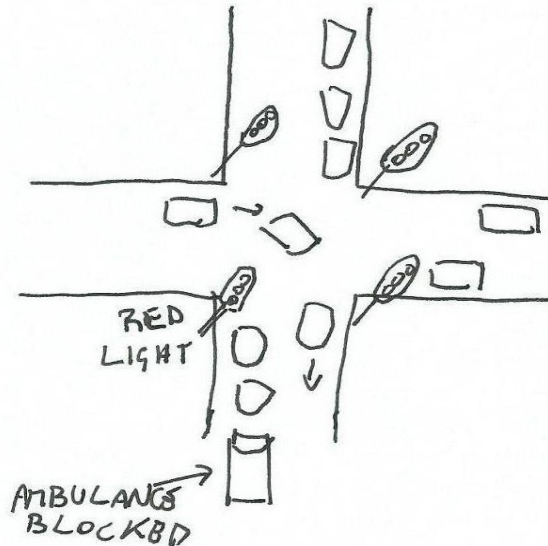


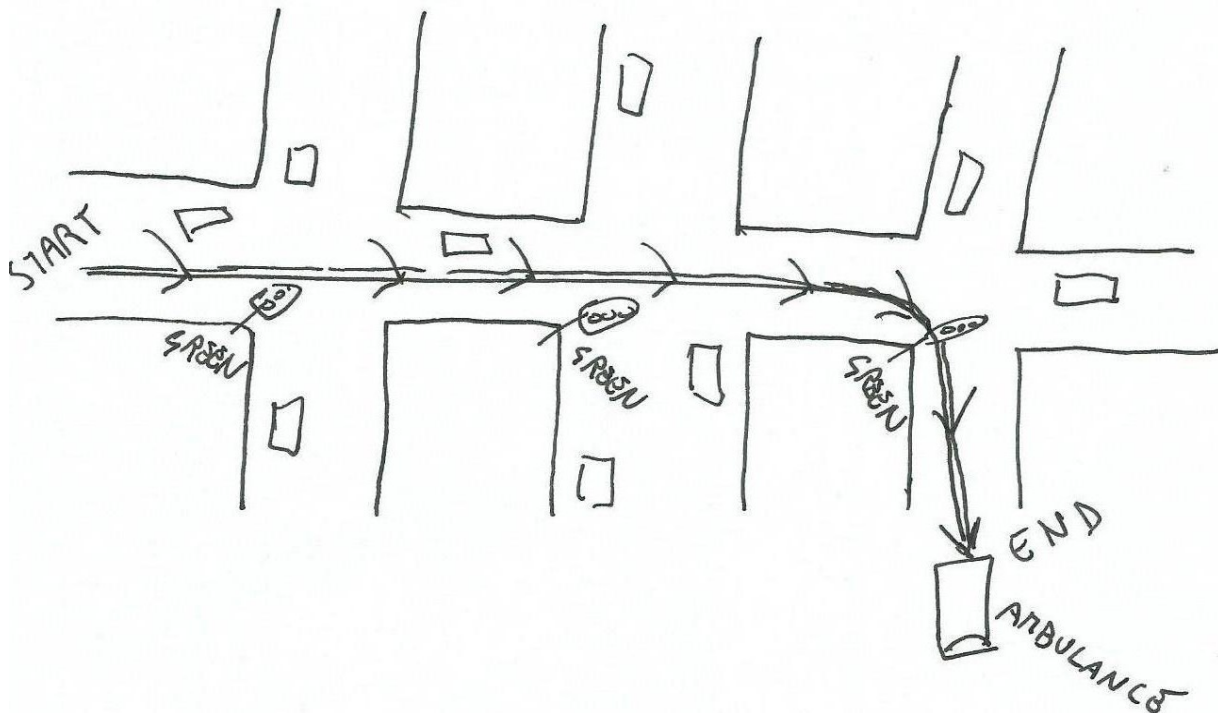
# AMBULANCE GREEN WAY

## MAKING TRAFFIC LIGHTS ALWAYS GREEN

This invention can save lives. An ambulance is often blocked by the traffic and even if it has sirens, the cars ahead are blocked in front of the red light, while on the opposite lane there are often cars coming.

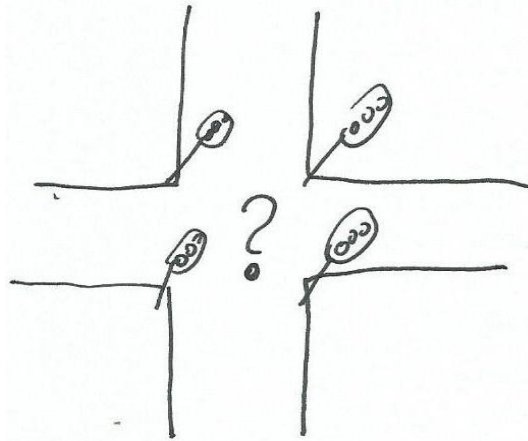


The solution is a special traffic light pole that can detect an ambulance and show the green light, while on the crossing road appear the red light

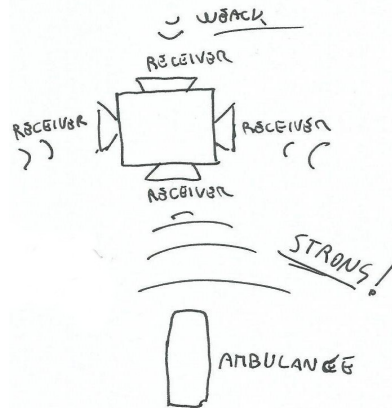


The ambulance above passed through three crossings without stopping, because even the cars in front of it found the green light and advanced along the road.

But there is a big technical problem to be solved. How can the system recognize from which side is the ambulance coming? In a crossing there are four traffic light poles and only two should show the green, but which two?



The problem can be solved by adding 4 sound receivers on the four sides of the traffic light poles. On three sides the signal is weaker, whereas on one side it's stronger.



If the sound is coming from the same side the traffic light pole is looking at, then the green light is triggered.

The system is made of very cheap technology and just need to be installed in the traffic light, there is nothing to install in the ambulance. There is no need of GPS or radio signals. Nonetheless, this can save many lives!